



**2008 Volvo S80**

**• VEHICLE REPORT**

2008 Volvo S80 S80 3.2 A SR 4dr Sdn I6 FWD

**WINDOW STICKER**

Code	Model	MSRP
S80 3.2 A SR	2008 Volvo S80 S80 3.2 A SR 4dr Sdn I6 FWD	\$38,705.00
Code	Options	MSRP
21__	LEATHER SEATING SURFACES	\$0.00
__	STANDARD PAINT	\$0.00
__	CLIMATE PKG	\$1,600.00
__	CLIMATE PKG SAVINGS	-\$725.00
000583	PERSONAL CAR COMMUNICATOR (PCC)	\$495.00
<b>SUBTOTAL</b>		<b>\$40,075.00</b>
<i>Advert/Adjustments</i>		<i>\$0.00</i>
<i>Destination Charge</i>		<i>\$745.00</i>
<b>TOTAL PRICE</b>		<b>\$40,820.00</b>
<i>Est City: 16.00 mpg</i>		
<i>Est Highway: 24.00 mpg</i>		
<i>Est Highway Cruising Range: 444.00 mi</i>		



**2008 Volvo S80**

**• VEHICLE REPORT** 2008 Volvo S80 S80 3.2 A SR 4dr Sdn I6 FWD

**SELECTED MODEL**

Code	Description	Invoice	MSRP
S80 3.2 A SR	2008 Volvo S80 4dr Sdn I6 FWD	\$36,383.00	\$38,705.00

**SELECTED VEHICLE COLORS**

Code	Description
-	Interior: No color has been selected.
-	Exterior 1: No color has been selected.
-	Exterior 2: No color has been selected.

**SELECTED OPTIONS**

Code	Description	Invoice	MSRP
<b>SEAT TRIM</b>			
21__	LEATHER SEATING SURFACES (STD)	\$0.00	\$0.00
<b>PAINT</b>			
__	STANDARD PAINT	\$0.00	\$0.00
<b>ADDITIONAL OPTIONS</b>			
__	CLIMATE PKG -inc: heated front seats, heated rear seats, heated windshield washer nozzles, rain sensor, high pressure headlamp washers *GROSS*	\$1,377.00	\$1,600.00
__	CLIMATE PKG SAVINGS *DISCOUNT*	-\$625.00	-\$725.00
000583	PERSONAL CAR COMMUNICATOR (PCC) -inc: keyless drive, two-way communication of vehicle security status, heartbeat sensor for security system	\$426.00	\$495.00
OPTIONS TOTAL		\$1,178.00	\$1,370.00



**2008 Volvo S80**

**• VEHICLE REPORT**

2008 Volvo S80 S80 3.2 A SR 4dr Sdn I6 FWD

**PRICING SUMMARY**

Price Component	Invoice	MSRP
<i>Base Price</i>	\$36,383.00	\$38,705.00
<i>Total Options</i>	\$1,178.00	\$1,370.00
<i>Vehicle Subtotal</i>	\$37,561.00	\$40,075.00
<i>Advert/Adjustments</i>	\$0.00	\$0.00
<i>Destination Charge</i>	\$745.00	\$745.00
<b>TOTAL VEHICLE PRICE</b>	<b>\$38,306.00</b>	<b>\$40,820.00</b>



2008 Volvo S80

## • VEHICLE REPORT

2008 Volvo S80 S80 3.2 A SR 4dr Sdn I6 FWD

### STANDARD EQUIPMENT

#### Mechanical

---

- 3.2L DOHC 24-valve VCT I6 engine
- 6-speed Geartronic automatic transmission
- Dynamic stability & traction control (DSTC)
- Front wheel drive
- MacPherson strut front suspension
- Multi-link independent rear suspension
- Front/rear stabilizer bars
- P225/50R17 tires
- 17" x 7" "REGOR" alloy wheels
- Pwr hydraulic rack & pinion steering
- Pwr ventilated front/solid rear disc brakes
- 4-wheel anti-lock braking system (ABS) w/electronic brake distribution (EBD), hydraulic brake assist (HBA)

#### Exterior

---

- Pwr glass moonroof
- Halogen headlamps
- Front fog lights
- Rear fog light w/auto-off
- Safe Approach & Home Safe security lighting
- Daytime running lights
- Pwr heated mirrors w/memory, puddle lights, integrated turn signals
- Variable intermittent windshield wipers

#### Interior

---

- Front reclining bucket seats-inc: head restraints
- Pwr front seats w/driver memory
- 60/40 split-fold rear seat-inc: cargo area pass-through, armrest

Report content is based on current data version referenced. Any performance-related calculations are offered solely as guidelines. Actual unit performance will depend on your operating conditions. PC Carbook®, Data Version: 163.3, Data updated 8/17/2010 3:37:00 PM ©Copyright 1986-2006 Chrome Systems Inc. All rights reserved.



**2008 Volvo S80**

## • VEHICLE REPORT

2008 Volvo S80 S80 3.2 A SR 4dr Sdn I6 FWD

### STANDARD EQUIPMENT

- *Flat-folding front passenger seat*
- *Pwr folding rear head restraints*
- *Leather seating surfaces*
- *Front center armrest*
- *(2) front/(2) rear cup holders*
- *Front/rear floor mats*
- *Leather-wrapped tilt/telescopic steering wheel w/illuminated cruise & audio controls*
- *Trip computer*
- *Driver info display*
- *Outside temp gauge*
- *Tire pressure monitoring system*
- *Pwr windows-inc: auto-up/down, anti-trap feature*
- *Central pwr door locks*
- *Remote keyless entry*
- *Valet lockout*
- *HomeLink universal garage door opener*
- *Cruise control*
- *Intelligent driver information system (IDIS)*
- *Security alarm system*
- *Ignition immobilizer*
- *AM/FM stereo w/6-disc in-dash CD/MP3/WMA changer-inc: (8) speakers, 160-watt amp, RDS, aux input*
- *Dual-zone electronic climate control (ECC)-inc: rear seat vents*
- *Rear window defroster w/timer*
- *Pollen filter*
- *Illuminated lockable glove box*



2008 Volvo S80

## • VEHICLE REPORT

2008 Volvo S80 S80 3.2 A SR 4dr Sdn I6 FWD

### STANDARD EQUIPMENT

- Wood inlays
- 12V pwr outlet
- Front door storage pockets
- Auto-dimming rearview mirror w/compass
- Dual illuminated visor vanity mirrors
- Front/rear reading lamps
- (2) front footwell entry lights
- Cargo area lights
- Interior cabin light delay feature
- Leather shift knob

### Epa Fuel Economy Ratings

- City 16/hwy 24 (3.2L engine/6-speed Geartronic auto trans)

### Safety

- 4-wheel anti-lock braking system (ABS) w/electronic brake distribution (EBD), hydraulic brake assist (HBA)
- Driver/front passenger dual stage airbags w/front passenger cutoff switch
- Side impact protection system (SIPS)-inc: driver/front passenger side-impact airbags, front/rear side inflatable curtains (IC)
- 3-point seat belts for all seating positions-inc: pretensioners
- Overhead-mounted seat belt reminder lights
- Child safety rear door locks
- Rear window deactivation
- ISO-FIX child seat attachments
- Emergency trunk release
- Dynamic stability & traction control (DSTC)
- Driver/front passenger whiplash protection seating system (WHIPS)
- Collapsible steering column
- Anti-submarine seats

Report content is based on current data version referenced. Any performance-related calculations are offered solely as guidelines. Actual unit performance will depend on your operating conditions. PC Carbook®, Data Version: 163.3, Data updated 8/17/2010 3:37:00 PM ©Copyright 1986-2006 Chrome Systems Inc. All rights reserved.



**2008 Volvo S80**

• **VEHICLE REPORT**

2008 Volvo S80 S80 3.2 A SR 4dr Sdn I6 FWD

**STANDARD EQUIPMENT**

- *Daytime running lights*



**2008 Volvo S80**

## • WARRANTY INFORMATION

2008 Volvo S80 S80 3.2 A SR 4dr Sdn I6 FWD

### WARRANTY INFORMATION

*WARRANTY*

*Basic:*

*4 Years/50,000 Miles*

*Drivetrain:*

*4 Years/50,000 Miles*

*Corrosion:*

*12 Years/Unlimited Miles*

*Roadside Assistance:*

*4 Years/Unlimited Miles*



**2008 Volvo S80**

## • TECHNICAL SPECIFICATIONS

2008 Volvo S80 S80 3.2 A SR 4dr Sdn I6 FWD

### POWERTRAIN - BASIC SPECIFICATIONS

#### Engine

---

<i>Engine Order Code</i>	
<i>Engine Type</i>	Gas I6
<i>Displacement</i>	3.2L/195 CID
<i>SAE Net Horsepower @ RPM</i>	235 @ 6200
<i>SAE Net Torque (lb ft) @ RPM</i>	236 @ 3200

#### Transmission

---

<i>Transmission order code</i>	
<i>Transmission Type Description</i>	6-Speed Automatic Geartronic
<i>Drive Train</i>	Front Wheel Drive

#### Mileage

---

<i>City EPA fuel economy estimate (MPG)</i>	16.00
<i>Hwy EPA fuel economy estimate (MPG)</i>	24.00
<i>City cruising range (mi)</i>	296.00
<i>Hwy cruising range (mi)</i>	444.00

\* Indicates equipment which is in addition to or replaces base model's standard equipment.



**2008 Volvo S80**

**• TECHNICAL SPECIFICATIONS**

2008 Volvo S80 S80 3.2 A SR 4dr Sdn I6 FWD

**PAYLOAD/TRAILERING SPECIFICATIONS**

Weight Information

*Base curb weight (lbs)* 3,825.00

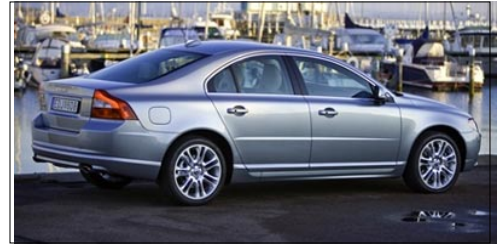
Trailerling Max Trailer Wt. Max Tongue Load

*Dead Weight Hitch (lbs)* 3,307.00 330.00

*Weight Distributing Hitch (lbs)* 3,307.00 330.00

*Fifth Wheel Hitch (lbs)*

\* Indicates equipment which is in addition to or replaces base model's standard equipment.



**2008 Volvo S80**

**• TECHNICAL SPECIFICATIONS** 2008 Volvo S80 S80 3.2 A SR 4dr Sdn I6 FWD

**DIMENSIONS**

Exterior Dimensions

Wheelbase (in)	111.60
Length, Overall (in)	191.00
Width, Max w/o mirrors (in)	73.30
Height, Overall (in)	58.80
Tread Width	
Track Width, Front	62.10
Track Width, Rear	62.00
Min Ground Clearance (in)	- TBD -

Cargo Area Dimensions

Liftover Height (in)	- TBD -
Trunk Volume	14.90

Interior Dimensions

Passenger Capacity	5	
Passenger Volume (ft³)	98.00	
EPA Classification	Midsize	
Seating Position	Front	Second
Head Room (in)	37.80	38.30
Leg Room (in)	41.90	35.00
Shoulder Room (in)	57.40	56.30
Hip Room (in)	54.80	54.70

\* Indicates equipment which is in addition to or replaces base model's standard equipment.