

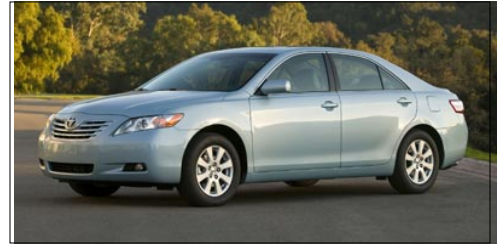
2008 Toyota Camry

• VEHICLE REPORT 2008 Toyota Camry 2540 4dr Sdn I4 Auto XLE (Natl)

WINDOW STICKER

Code	Model	MSRP
2540	2008 Toyota Camry 2540 4dr Sdn I4 Auto XLE (Natl)	\$25,000.00
Code	Options	MSRP
FE	50 STATE EMISSIONS	\$0.00
LA_	LEATHER SEAT TRIM	INC
—	STANDARD PAINT	\$0.00
HD	DRIVER & FRONT PASSENGER HEATED SEATS	\$440.00
LA	LEATHER PKG	\$1,050.00
CF	5-PIECE CARPETED FLOOR & TRUNK MAT SET	\$199.00
SUBTOTAL		\$26,689.00
Advert/Adjustments		\$0.00
Destination Charge		\$750.00
TOTAL PRICE		\$27,439.00

Est City: 21.00 mpg
 Est Highway: 31.00 mpg
 Est Highway Cruising Range: 573.50 mi



2008 Toyota Camry

• VEHICLE REPORT 2008 Toyota Camry 2540 4dr Sdn I4 Auto XLE (Natl)

SELECTED MODEL

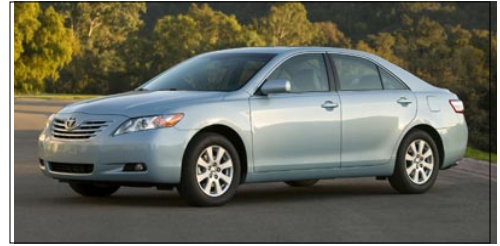
Code	Description	Invoice	MSRP
2540	2008 Toyota Camry 4dr Sdn I4 Auto XLE (Natl)	\$22,250.00	\$25,000.00

SELECTED VEHICLE COLORS

Code	Description
-	Interior: No color has been selected.
-	Exterior 1: No color has been selected.
-	Exterior 2: No color has been selected.

SELECTED OPTIONS

Code	Description	Invoice	MSRP
EMISSIONS			
FE	50 STATE EMISSIONS	\$0.00	\$0.00
SEAT TRIM			
LA__	LEATHER SEAT TRIM (REQ: LA Pkg)	INC	INC
PAINT TYPE			
___	STANDARD PAINT	\$0.00	\$0.00
ADDITIONAL OPTIONS			
HD	DRIVER & FRONT PASSENGER HEATED SEATS (REQ: LA Leather Pkg)	\$352.00	\$440.00
LA	LEATHER PKG -inc: pwr driver seat	\$840.00	\$1,050.00
POST PRODUCTION OPTIONS			
CF	5-PIECE CARPETED FLOOR & TRUNK MAT SET (PPO)	\$126.00	\$199.00
OPTIONS TOTAL		\$1,318.00	\$1,689.00



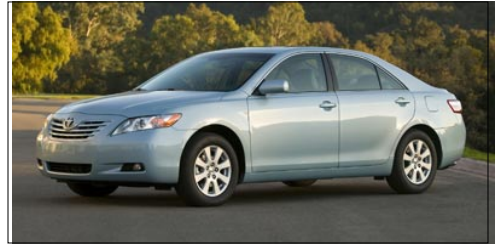
2008 Toyota Camry

• **VEHICLE REPORT**

2008 Toyota Camry 2540 4dr Sdn I4 Auto XLE (Natl)

PRICING SUMMARY

Price Component	Invoice	MSRP
<i>Base Price</i>	\$22,250.00	\$25,000.00
<i>Total Options</i>	\$1,318.00	\$1,689.00
<i>Vehicle Subtotal</i>	\$23,568.00	\$26,689.00
<i>Advert/Adjustments</i>	\$0.00	\$0.00
<i>Destination Charge</i>	\$750.00	\$750.00
TOTAL VEHICLE PRICE	\$24,318.00	\$27,439.00



2008 Toyota Camry

• VEHICLE REPORT

2008 Toyota Camry 2540 4dr Sdn I4 Auto XLE (Natl)

STANDARD EQUIPMENT

Mechanical

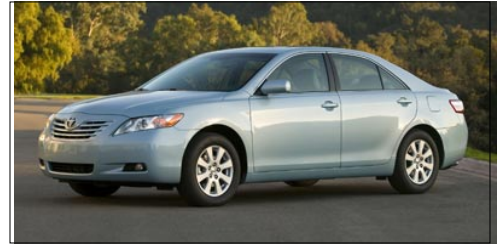
- 2.4L DOHC MPFI VVT-i 16-valve 4-cyl engine
- 5-speed ECT-i automatic transmission w/OD
- Front wheel drive
- Battery saver feature
- Independent MacPherson strut front suspension
- Independent dual-link rear suspension
- Front/rear stabilizer bars
- P215/60R16 all-season tires
- T155/70D17 temporary spare tire
- 16" x 6.5" 8-spoke alloy wheels
- Variable assist pwr rack & pinion steering
- Pwr front ventilated/rear solid disc brakes w/brake assist
- 4-wheel anti-lock brake system w/electronic brake-force distribution
- Chrome exhaust tip

Exterior

- Pwr tilt/slide moonroof w/sunshade
- Halogen headlamps w/auto on/off
- Integrated fog lamps
- Daytime running lamps
- High solar energy-absorbing glass
- Heated pwr mirrors
- Variable intermittent windshield wipers

Interior

- Front bucket seats-inc: driver height adjuster, driver lumbar support, dual seatback pockets
- Multi-adjustable pwr front seats



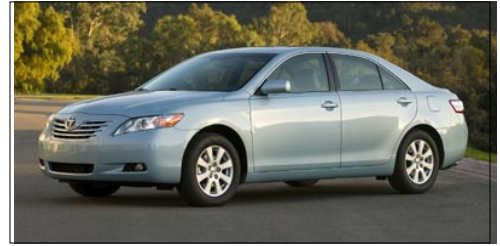
2008 Toyota Camry

• VEHICLE REPORT

2008 Toyota Camry 2540 4dr Sdn I4 Auto XLE (Natl)

STANDARD EQUIPMENT

- *40/20/40 split manually reclining rear seats-inc: center armrest w/cup holders, locking trunk pass-through*
- *Fabric seat trim w/Fraichir treatment*
- *Adjustable front & rear headrests*
- *Center console armrest w/dual storage compartments*
- *Sliding center armrest*
- *Fold-down rear center armrest w/dual cup holders*
- *Leather-wrapped tilt/telescoping steering wheel w/audio controls*
- *Digital clock*
- *Multi-information display-inc: outside temp, trip computer*
- *Optitron gauges-inc: twin tripmeters, outside temp display*
- *Pwr windows w/driver-side auto up/down, retained pwr, pinch protection*
- *Pwr auto door locks w/anti-lockout feature*
- *Remote trunk & fuel door releases*
- *HomeLink universal transceiver*
- *Cruise control*
- *Tire pressure monitor system*
- *Remote keyless entry-inc: trunk release, panic feature*
- *Anti-theft system-inc: alarm, engine immobilizer*
- *HD electric rear window defogger w/timer*
- *JBL AM/FM stereo w/6-disc in-dash CD changer-inc: satellite radio capability, MP3/WMA playback, auxiliary audio jack, Bluetooth, (8) speakers*
- *Defroster-linked dual-zone auto climate control-inc: dust & pollen filter, Plasmacluster ionizer, steering wheel controls, rear seat vents*
- *Lockable illuminated glove box*
- *In-glass antenna*
- *(2) 12V auxiliary pwr outlets*
- *Wood-grain style interior trim w/chrome door handles*



2008 Toyota Camry

• VEHICLE REPORT

2008 Toyota Camry 2540 4dr Sdn I4 Auto XLE (Natl)

STANDARD EQUIPMENT

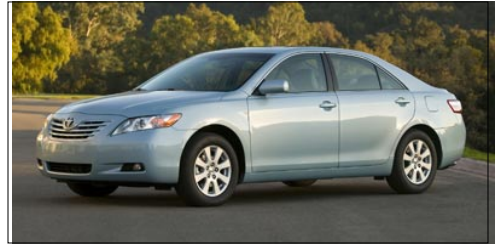
- *Auto-dimming rearview mirror w/compass*
- *Dual illuminated visor vanity mirrors*
- *Illuminated entry*
- *Rear reading lights*
- *Overhead console w/front map lights & sunglass holder*
- *Front & rear map pockets*
- *Manual retractable rear sunshade*
- *Cargo net*
- *Trunk luggage box*

Safety

- *4-wheel anti-lock brake system w/electronic brake-force distribution*
- *Driver & front passenger advanced airbags w/occupant sensor*
- *Driver & front passenger seat-mounted side airbags*
- *Front & rear side curtain airbags*
- *Driver knee airbag*
- *3-point seat belts-inc: front adjustable shoulder anchors, emergency locking retractors (ELR)*
- *LATCH child restraint system*
- *Internal trunk release handle*
- *Child-protector rear door locks*
- *Daytime running lamps*

Processing-other

- *City 21/hwy 31 (2.4L engine/5-speed auto trans)*



2008 Toyota Camry

• WARRANTY INFORMATION

2008 Toyota Camry 2540 4dr Sdn I4 Auto XLE (Natl)

WARRANTY INFORMATION

WARRANTY

Basic:

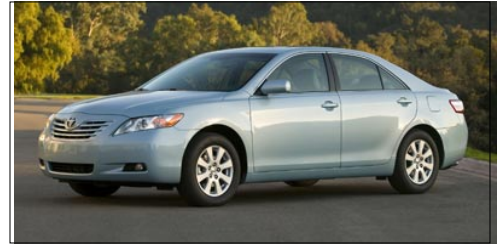
3 Years/36,000 Miles

Drivetrain:

5 Years/60,000 Miles

Corrosion:

5 Years/Unlimited Miles



2008 Toyota Camry

• TECHNICAL SPECIFICATIONS

2008 Toyota Camry 2540 4dr Sdn I4 Auto XLE (Natl)

POWERTRAIN - BASIC SPECIFICATIONS

Engine

<i>Engine Order Code</i>	
<i>Engine Type</i>	Gas I4
<i>Displacement</i>	2.4L/144 CID
<i>SAE Net Horsepower @ RPM</i>	158 @ 6000
<i>SAE Net Torque (lb ft) @ RPM</i>	161 @ 4000

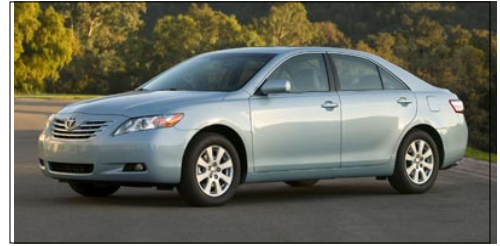
Transmission

<i>Transmission order code</i>	
<i>Transmission Type Description</i>	5-Speed Automatic w/OD
<i>Drive Train</i>	Front Wheel Drive

Mileage

<i>City EPA fuel economy estimate (MPG)</i>	21.00
<i>Hwy EPA fuel economy estimate (MPG)</i>	31.00
<i>City cruising range (mi)</i>	388.50
<i>Hwy cruising range (mi)</i>	573.50

* Indicates equipment which is in addition to or replaces base model's standard equipment.



2008 Toyota Camry

• TECHNICAL SPECIFICATIONS

2008 Toyota Camry 2540 4dr Sdn I4 Auto XLE (Natl)

PAYLOAD/TRAILERING SPECIFICATIONS

Weight Information

Base curb weight (lbs) 3,373.00

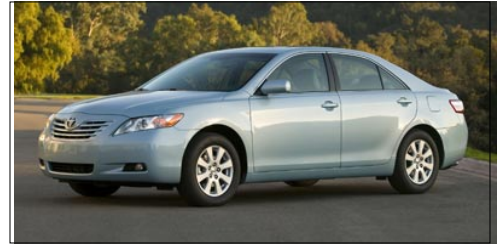
Trailerling Max Trailer Wt. Max Tongue Load

Dead Weight Hitch (lbs) 1,000.00 100.00

Weight Distributing Hitch (lbs) 1,000.00 100.00

Fifth Wheel Hitch (lbs)

** Indicates equipment which is in addition to or replaces base model's standard equipment.*



2008 Toyota Camry

• TECHNICAL SPECIFICATIONS

2008 Toyota Camry 2540 4dr Sdn I4 Auto XLE (Natl)

DIMENSIONS

Exterior Dimensions

Wheelbase (in)	109.30
Length, Overall (in)	189.20
Width, Max w/o mirrors (in)	71.70
Height, Overall (in)	57.90
Tread Width	
Track Width, Front	62.00
Track Width, Rear	61.60
Min Ground Clearance (in)	5.50

Cargo Area Dimensions

Liftover Height (in)	- TBD -
Trunk Volume	14.50

Interior Dimensions

Passenger Capacity	5	
Passenger Volume (ft³)	101.40	
EPA Classification	Mid-Size	
Seating Position	Front	Second
Head Room (in)	37.90	37.40
Leg Room (in)	41.70	38.30
Shoulder Room (in)	57.80	56.90
Hip Room (in)	54.60	53.90

* Indicates equipment which is in addition to or replaces base model's standard equipment.